



6 Ways Every Learning Leader Should Be Using Video

Ari Bixhorn
abixhorn@panopto.com

A man with dark hair, wearing a dark blue V-neck sweater, stands with his arms crossed in a server room. He is looking directly at the camera. The background shows rows of server racks with blue and green cables. A semi-transparent white box contains the text "I'm afraid I've accepted an offer at another company".

“I’m afraid I’ve accepted an offer at another company”



6 Ways Every Learning Leader Should Be Using Video

Ari Bixhorn
abixhorn@panopto.com



1. Preserving the Knowledge of Exiting Employees

40 hours of offboarding video

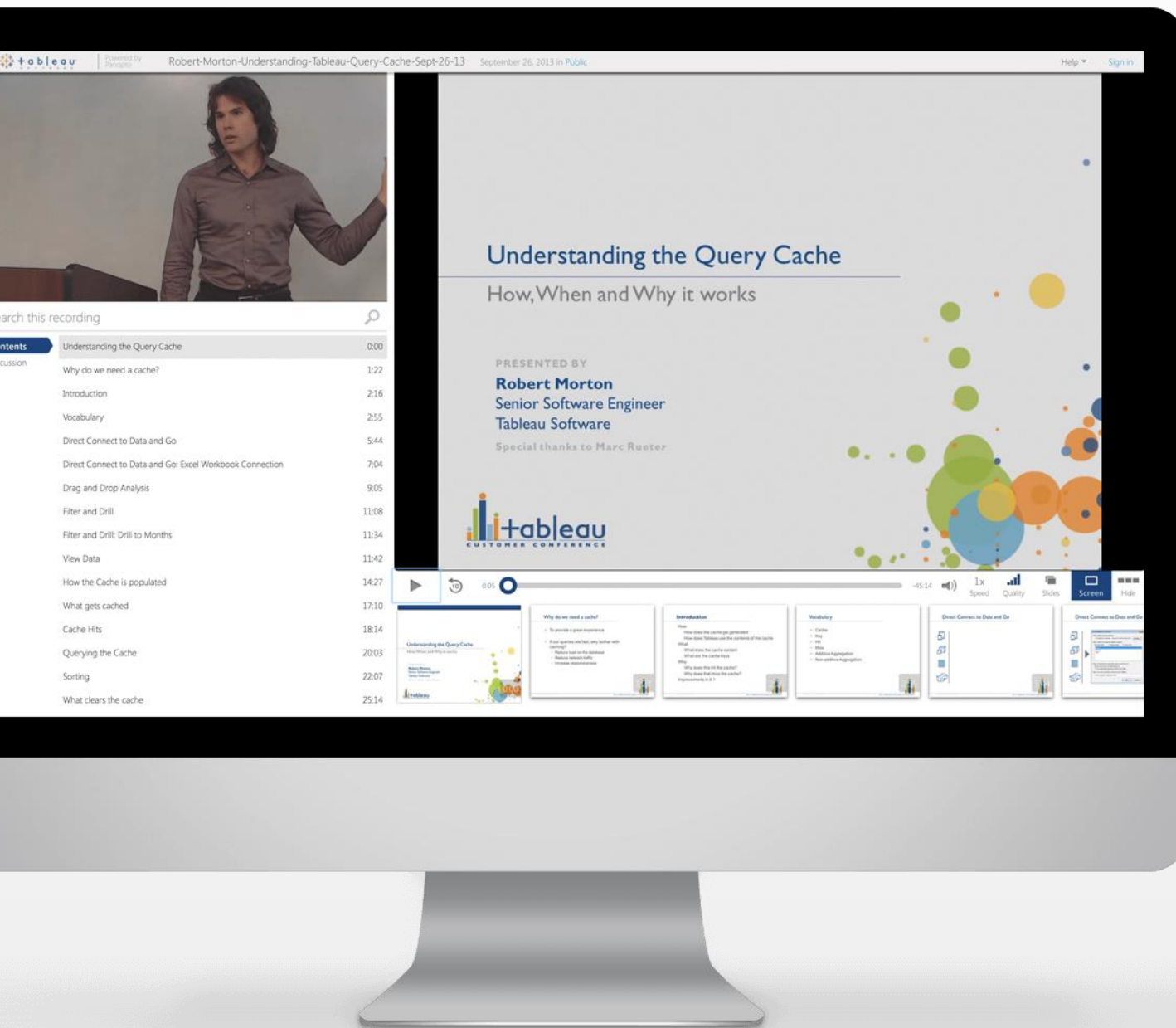
$125 \text{ wpm} \times 60 \text{ minutes} \times 40 \text{ hours} = 300,000 \text{ words}$

The equivalent of a 1,200 page document...

...but with 40 hours of moving pictures



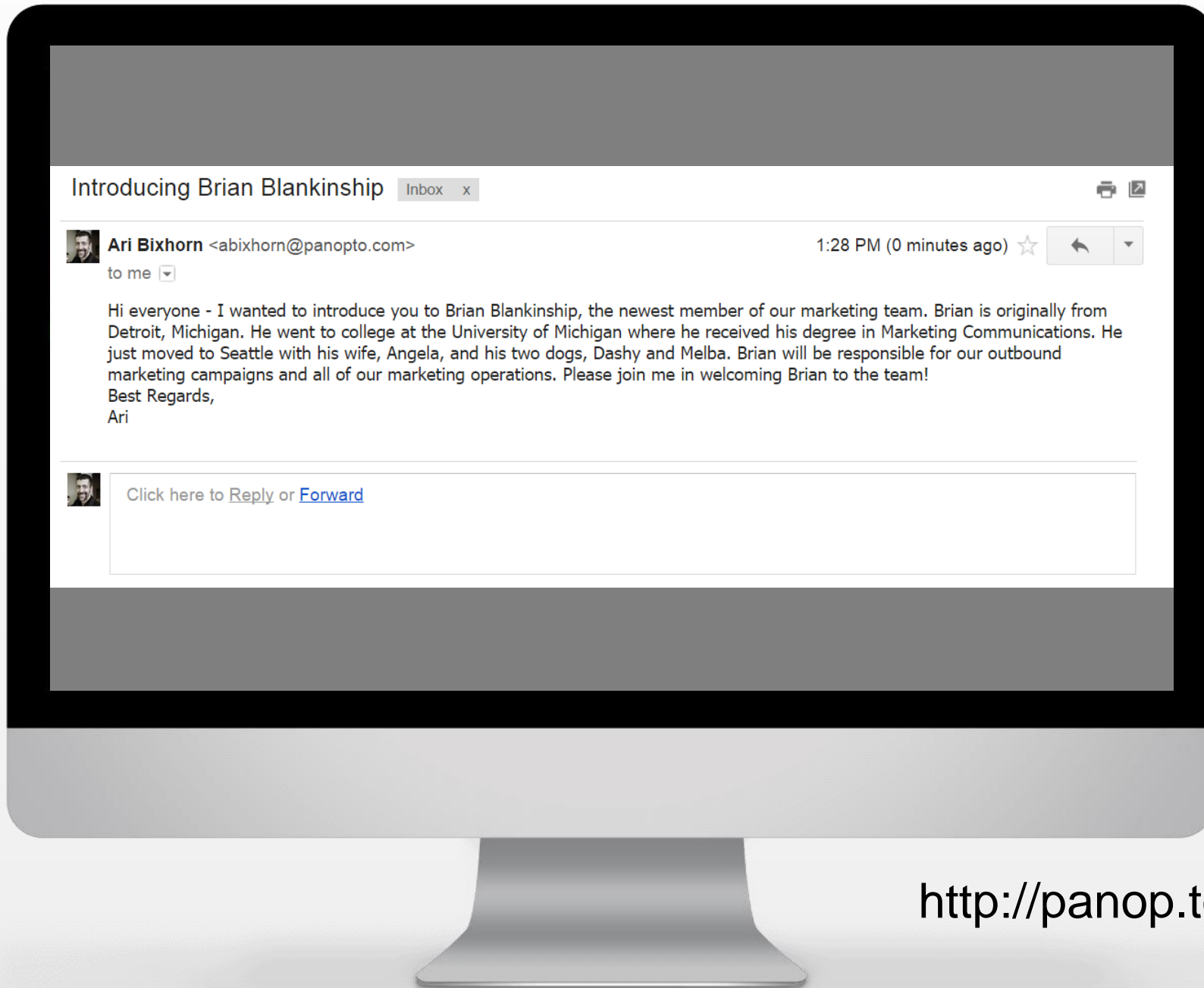
2. Employee Onboarding



Tripled employees in one year

Target: 30-day ramp-up

Complex analytics product



Introducing Brian Blankinship

Inbox x



Ari Bixhorn <abixhorn@panopto.com>

1:28 PM (0 minutes ago) ☆



to me ▾

Hi everyone - I wanted to introduce you to Brian Blankinship, the newest member of our marketing team. Brian is originally from Detroit, Michigan. He went to college at the University of Michigan where he received his degree in Marketing Communications. He just moved to Seattle with his wife, Angela, and his two dogs, Dashy and Melba. Brian will be responsible for our outbound marketing campaigns and all of our marketing operations. Please join me in welcoming Brian to the team!

Best Regards,
Ari



Click here to [Reply](#) or [Forward](#)

<http://panop.to/brian-intro>



3. Social Learning



1,000 employees

Each records a 5-10 minute learning video

Result: 1,000 mini-learning modules

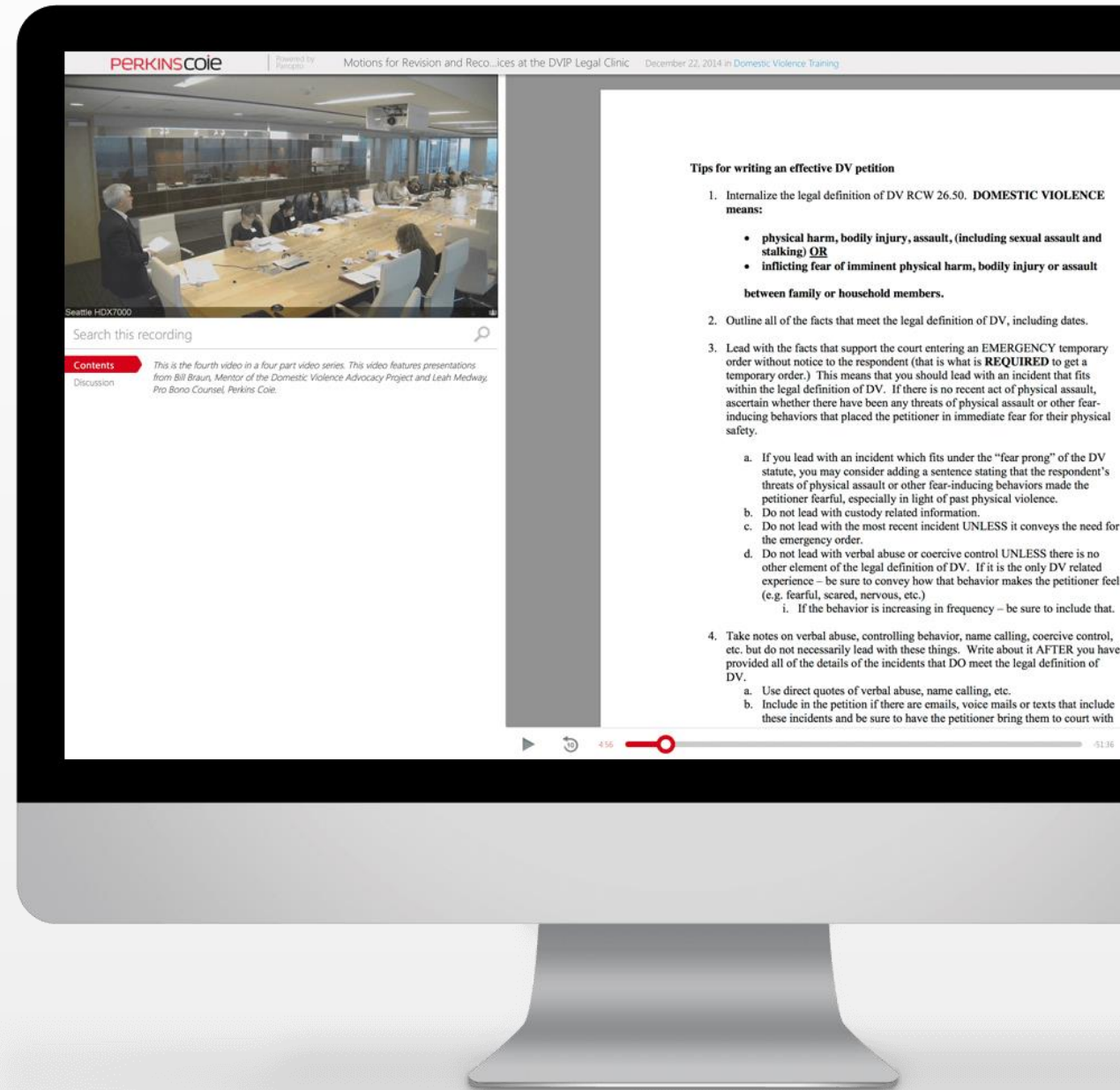
Near zero incremental cost

Expanding beyond formal learning

Meeting recording for attendees

Informal HR benefits videos

Attorney-to-attorney social learning





4. Mobile Learning



Mobile printer technicians

Range of models, issues

Carrying stacks of manuals





5. Executive Messaging





6. Recording Video at Scale



Search this recording

Contents	
Presenter: Patrick Perini • Recorded January 16, 2015	
Introduction to Smart Cities	0:00
Smart Cities	1:38
Smart Cities Market Verticals	3:33
Smart City Market Drivers	7:36
Smart City Challenges	13:53
Technical Challenges	19:17
Smart City Success Factors	24:28
Traditional Cities Vs. Smart Cities	29:29
Traditional Cities Vs. Smart Cities	32:47
Types of Smart City Participants	35:02

Smart City Challenges

Fragmented Smart City Vision

Scope of Refurbishing Existing Cities is Large and Costly

Socio-economic and Political factors

Lack of Financing

Leveraging ICT Know How

Obtaining & Sustaining Stakeholder Interest

Lack of Citizen & Public Staff Engagement

13:56

26:18

1x Speed

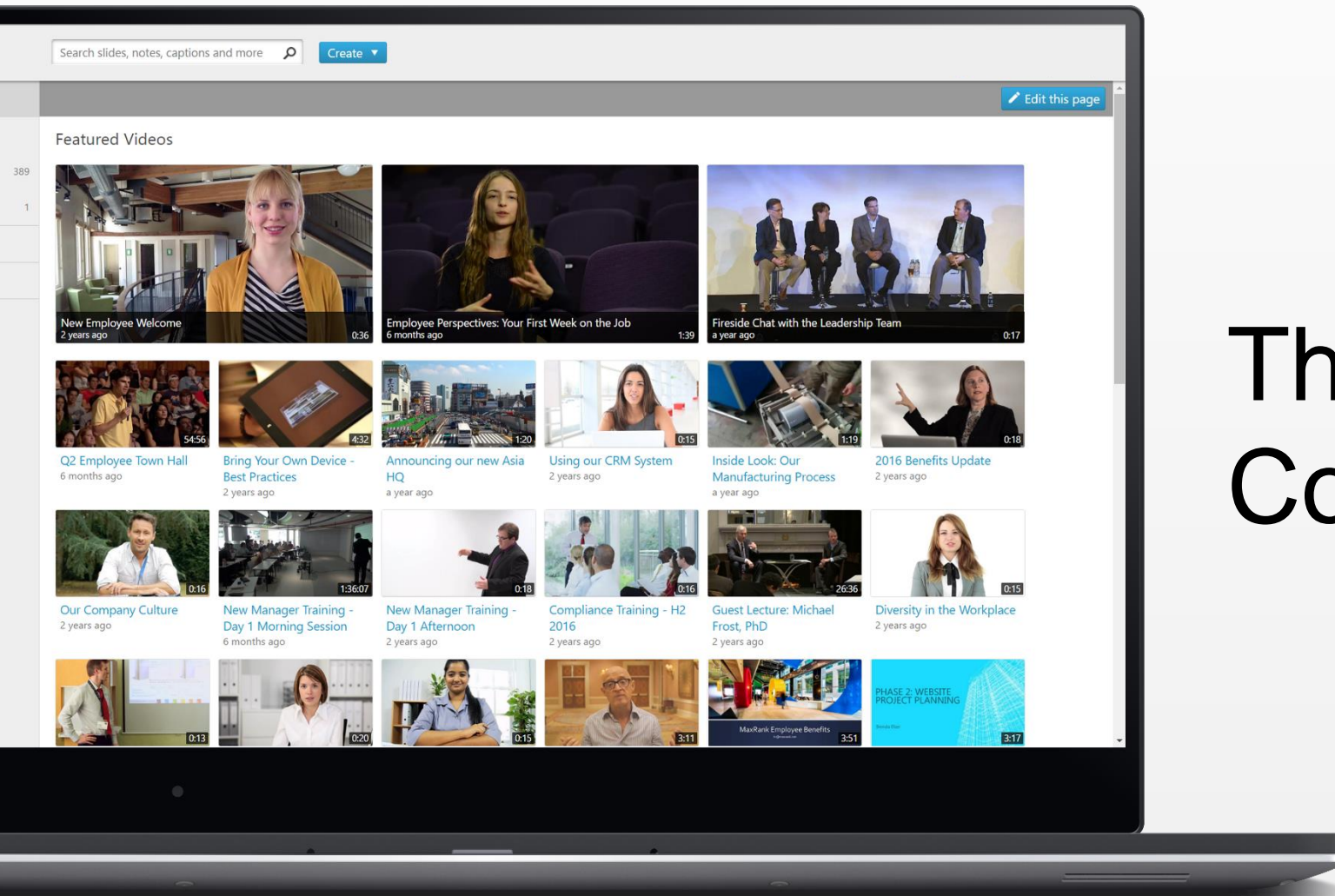
Quality

Hide

Qualcomm Wireless Academy

5 Enabling Trends





The Rise of the Corporate YouTube



Inside-Video Search



Network Security

This chapter presents a broad description of network security in the context of today's rapidly changing network environments. The security paradigm is changing, and security solutions today are solution driven and designed to meet the requirements of business. To help you face the complexities of managing a modern network, this chapter discusses the core principles of security—the CIA triad: confidentiality, integrity, and availability.

Intrusion Detection



An intrusion detection system (IDS) is a device or software application that monitors network or system activities for malicious activities or policy violations and produces reports to a management station. IDS come in a variety of “flavors” and approach the goal of detecting suspicious traffic in different ways. There are network based (NIDS) and host based (HIDS) intrusion detection systems. NIDS is a network security system focusing on the attacks that come from the inside of the network (authorized users). Some systems may attempt to stop an intrusion attempt but this is neither required nor expected of a monitoring

system. Intrusion detection and prevention systems (IDPS) are primarily focused on identifying possible incidents, logging information about them, and reporting attempts. In addition, organizations use IDPSes for other purposes, such as identifying problems with security policies, documenting existing threats and deterring individuals from violating security policies. IDPSes have been used by many organizations.

Manually-entered
title, description, tags



Helps you get here (sometimes)
But how do you get there?



DIY Learning Video

Millennials





Flipped Classroom



Video



Handbook

Comments and Questions

You can also reach me anytime at
abixhorn@panopto.com
www.panopto.com