



An Employee Owned Company

Demystify The Enterprise Learning Ecosystem

ATD Webinar WED | FEB 17, 2016

Nick Washburn
Director, Learning Division
nick.washburn@riptidesoftware.com

ELEMENTS[®]



Fast Facts



Established in 1995
grown to 122+ Employees



Formal Accreditation since 2005
One of only 9 US Companies
Appraised at L4



Headquartered in Oviedo, Florida
C- Level Relationships :
Raytheon, General Dynamics,
Northup Grumman, Booz Allen



Over 220 System
Deployments
Worldwide



2015 Brandon Hall
Excellence in LMS Technology



Professionals use our E Learning
platform for training.

“ One of the few
US Companies
Appraised at
level 4 CMMI ”



ELEMENTS Model

AUDIENCE

Learners access courses created and managed by content creators and admin through any device.

ELEMENTS FEATURES

- « Authentication / Authorization
- « Curriculum Management
- « Reporting & Analytics
- « Authoring & Configuration
- « Course Hosting & Delivery
- « Learning Record Store

xAPI POWERED

xAPI allows for detailed data collection of all your user data accessible anywhere.



TRYxAPI – Open Source

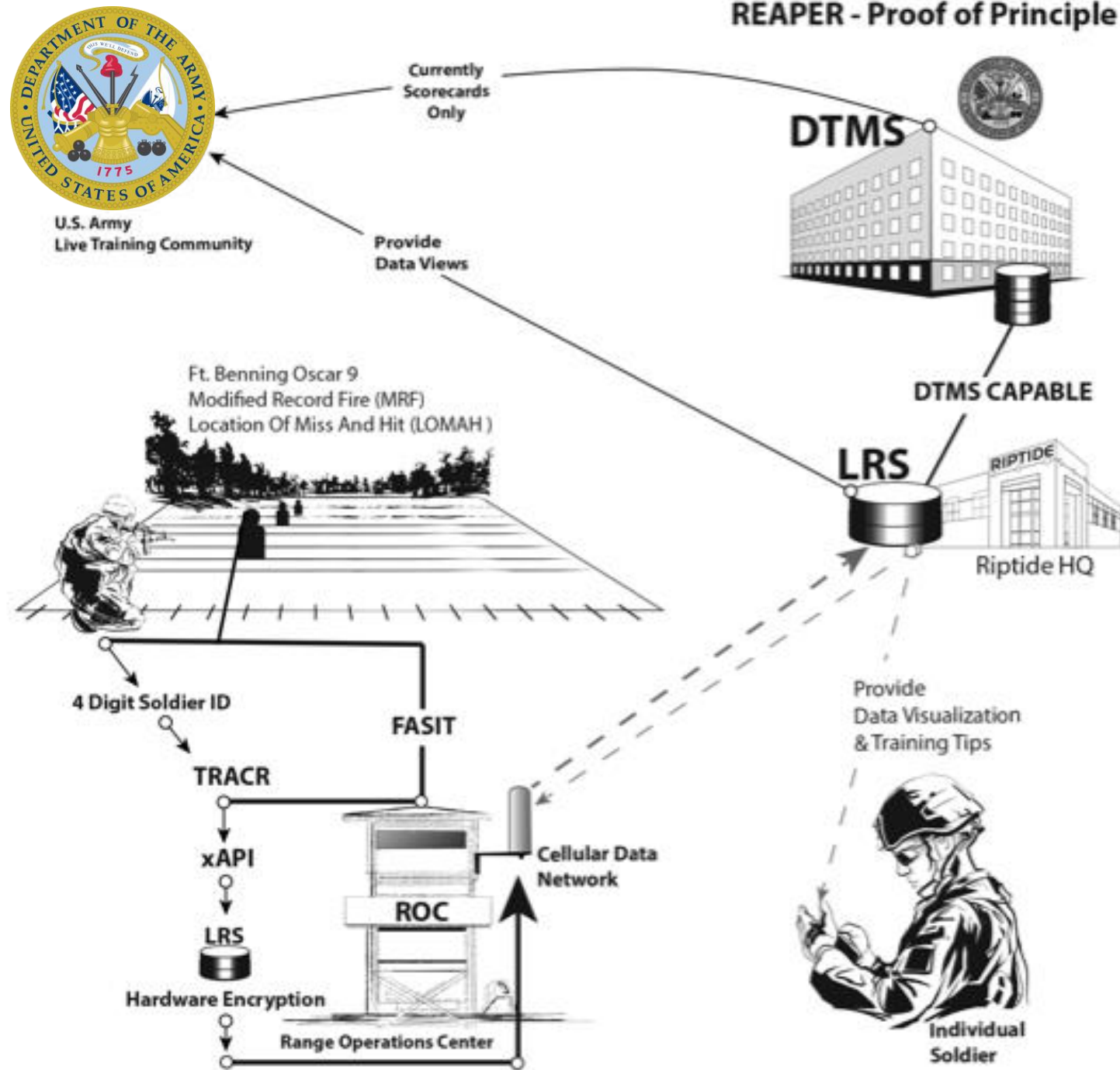
<https://github.com/tryxapi>

- [TRYxAPI.com](https://tryxapi.com)
 - Case Studies
 - Statement Validator
- xAPI Kit for Courseware
 - <https://github.com/TryxAPI/xapi-courseware-instrumentation>
- Easy to use xAPI client
 - <https://github.com/TryxAPI/xapi-client>
- Part of Workgroup that created xAPI 1.0
- xAPI Camps
- Data Interoperability Standards Consortium (DISC)
 - Advisory Board

REAPER Features

- Live Training Range reporting results via xAPI/LRS
 - Experience Application Programming Interface (xAPI)
 - Learning Record Store (LRS)
- Corrective Interactive Multimedia Instruction (IMI) delivered to Shooter
 - xAPI reporting of corrective IMI
- BRM10 data automated to DTMS
 - Digital Training Management System
 - Basic Rifle Marksmanship (BRM)
- Range data made available to Training Community
 - IMI training data made available

REAPER - Proof of Principle



Demystify The Enterprise

Application Program Interface /Device Agnostic Training/ Etc



Application Program Interface (API)

An API can be a powerful thing

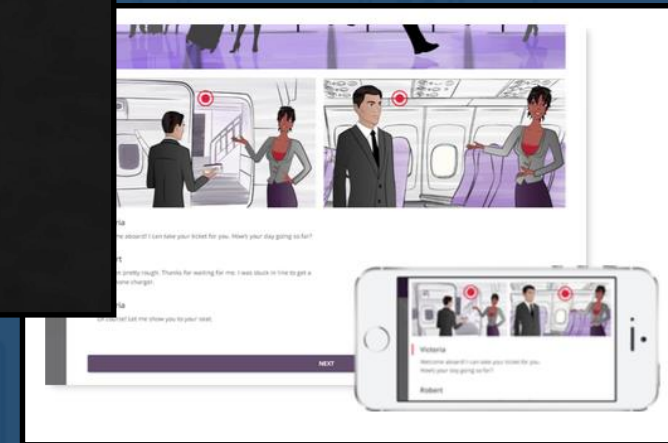
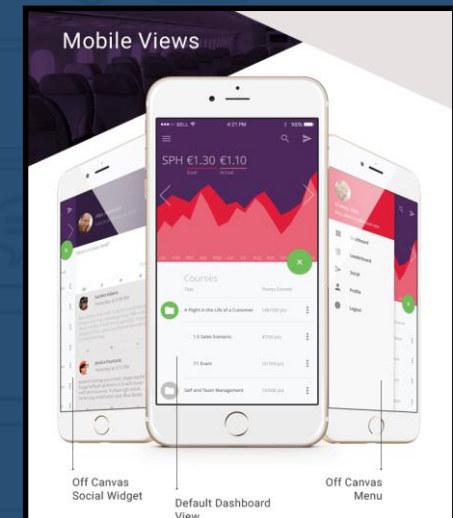
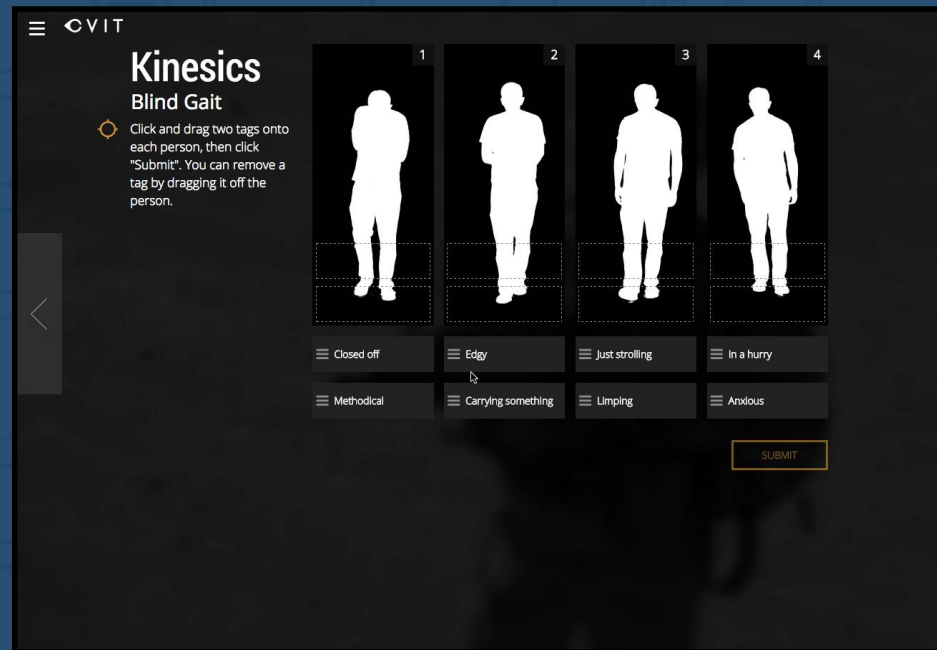
- Programmers can easily and securely interface and connect products and services
- Every software today is expected to have API



Device Agnostic E-learning

HTML5 - pushing the web browser

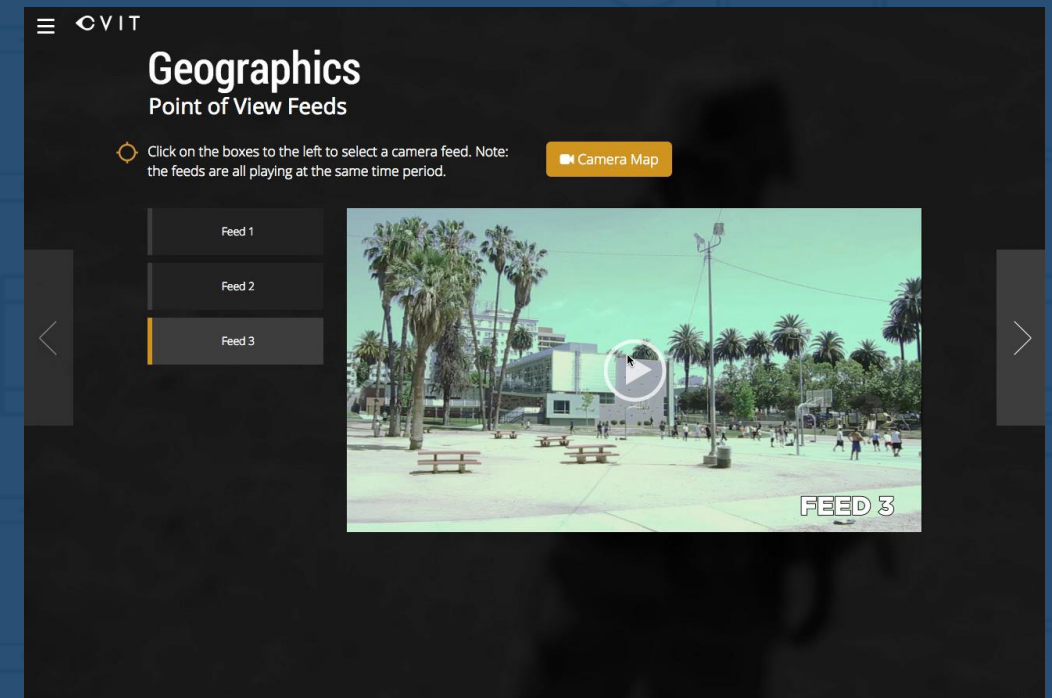
- Every Device has a Browser
- Technology in a steep curve
- HTML5 works with browser and native web view apps



Device Agnostic E-learning

3 Equally weighted issues

1. View: The ability for device/browser to display, render, and play highly interactive learning content.
2. Delivery: The proper hosting and delivery mechanism of the learning content
3. Reporting: Accurate, error free experience/interaction data and usage of the learning to verify competency.



Client Case

Commercial





ELEMENTS Model

AUDIENCE

Learners access courses created and managed by content creators and admin through any device.

ELEMENTS FEATURES

- « **Authentication / Authorization**
- « **Curriculum Management**
- « **Reporting & Analytics**
- « **Authoring & Configuration**
- « **Course Hosting & Delivery**
- « **Learning Record Store**

xAPI POWERED

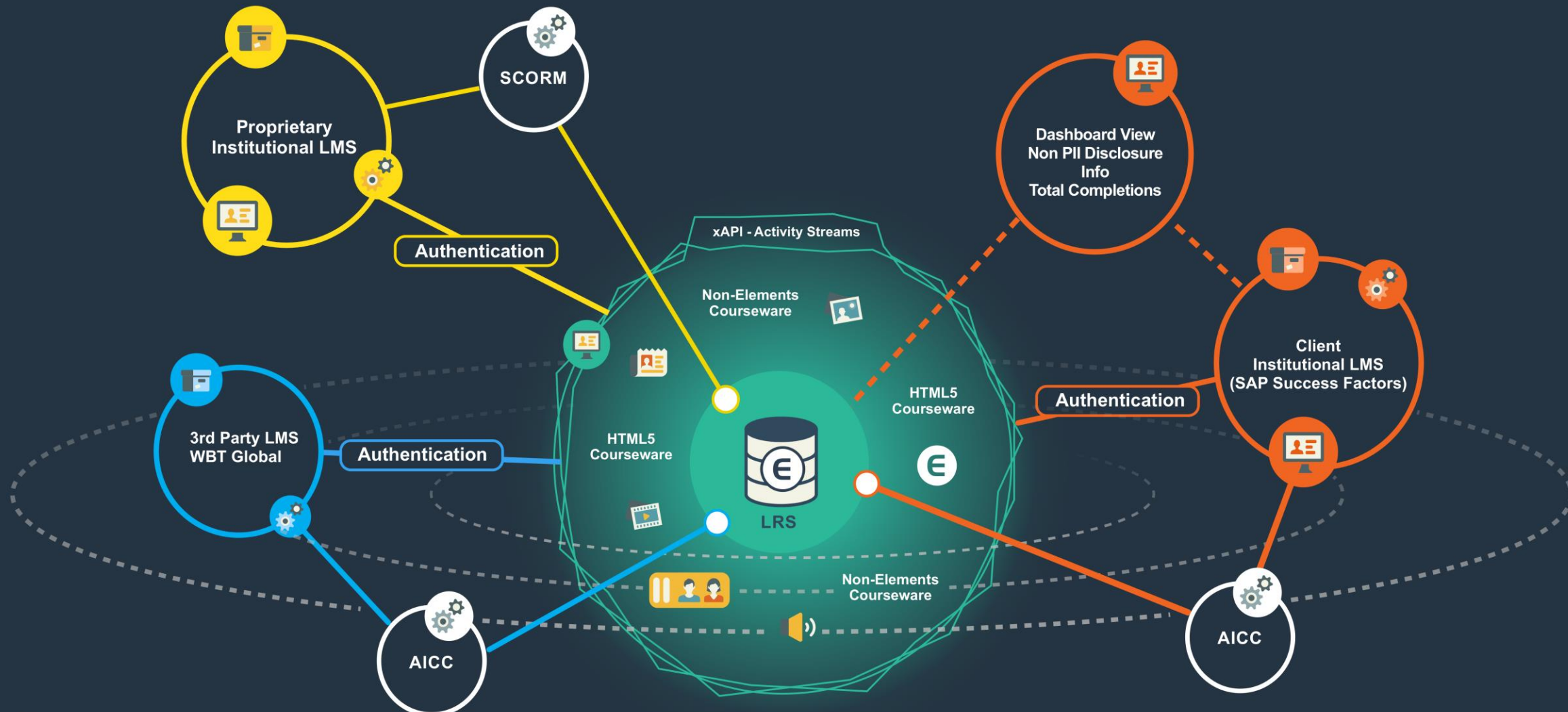
xAPI allows for detailed data collection of all your user data accessible anywhere.

Leading GRC Training Provider

Governance Risk and Compliance (GRC)

- Delivers training world-wide in multiple languages for all browsers tablet and above
- Many clients have 10's of thousands of users
- Integration to LMS and Clients Proprietary LMSs
- Large library of GRC training - GRC training provider
- Hosting of legacy Flash on Elements
- Elements HTML5 Courseware

Client base includes 98 of the Fortune 100



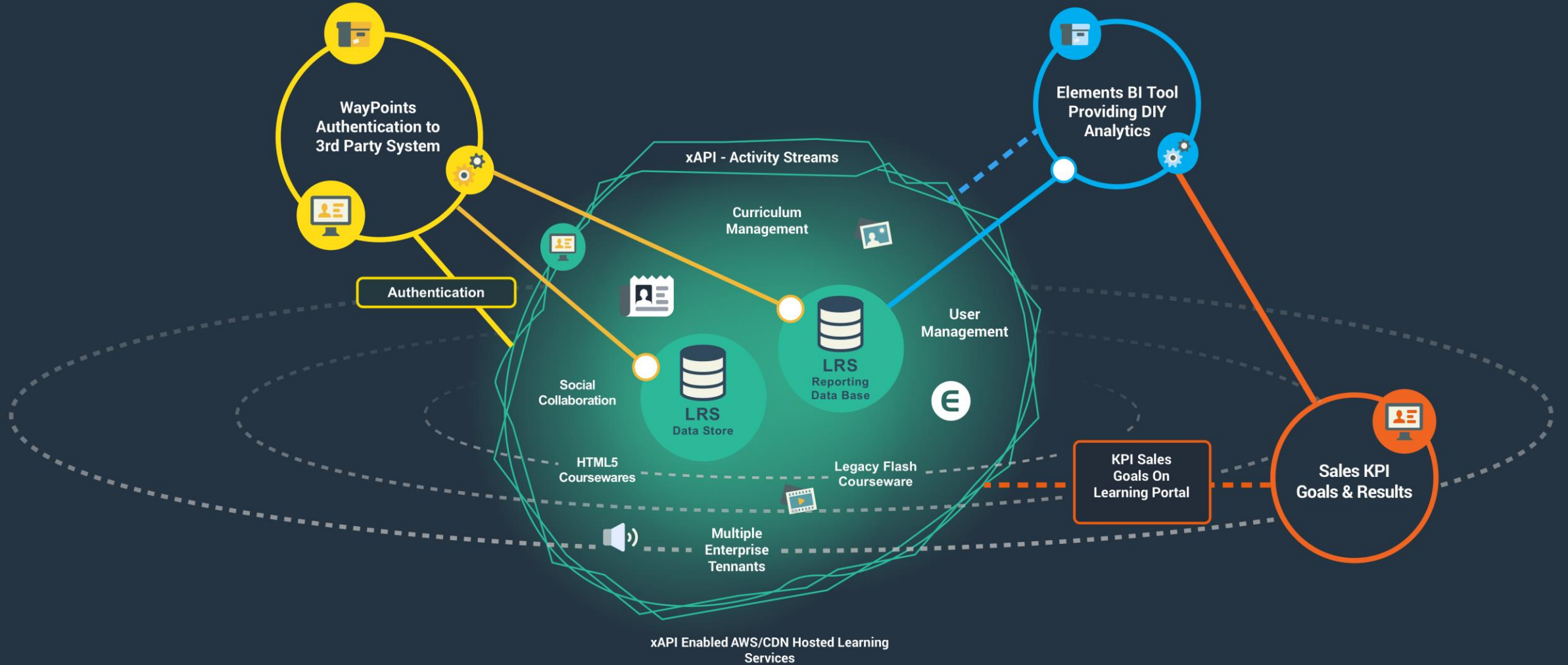
Multiple LMS Integrations
 Learner Progress Tracking
 Certification
 Multi-Languages
 Worldwide Delivery
 All Browsers Tablet and PC

xAPI Enabled AWS/CDN Hosted Learning Services

Leading Airline Hospitality Services Provider

Crew Training & Core Fulfillment System

- Crew Training
 - Learner Portal - Courseware to all devices
 - Certificate - User Surveys / Assessments
 - Gamification (pointed activities and Social Collaboration)
 - Integration to Sales Reporting
 - Multitenant / Admin Portal
 - Configure / Edit / Courses
- Core Fullfliment Software Training
 - Learner Portal - Courseware to all devices



Multiple System Integrations
 Waypoints In-line Training
 Competency Based
 BI Data Visualztion
 HTML5 Courseware
 Learner Progress Tracking

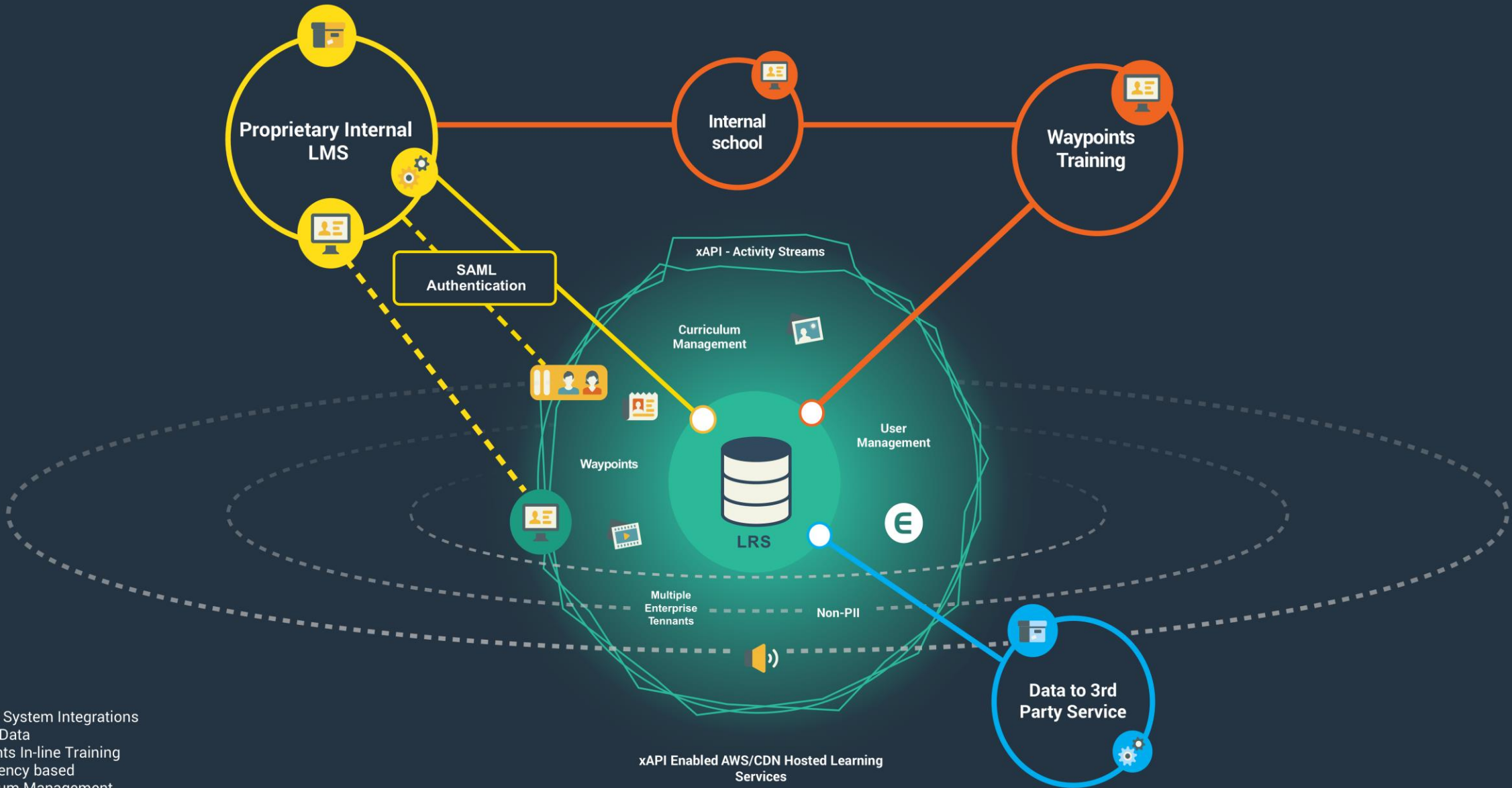
Certification
 Multi-Languages
 Worldwide Delivery
 All Browsers Tablet and PC
 Social Collaboration
 Product Knowledge

Leading Legal Research System

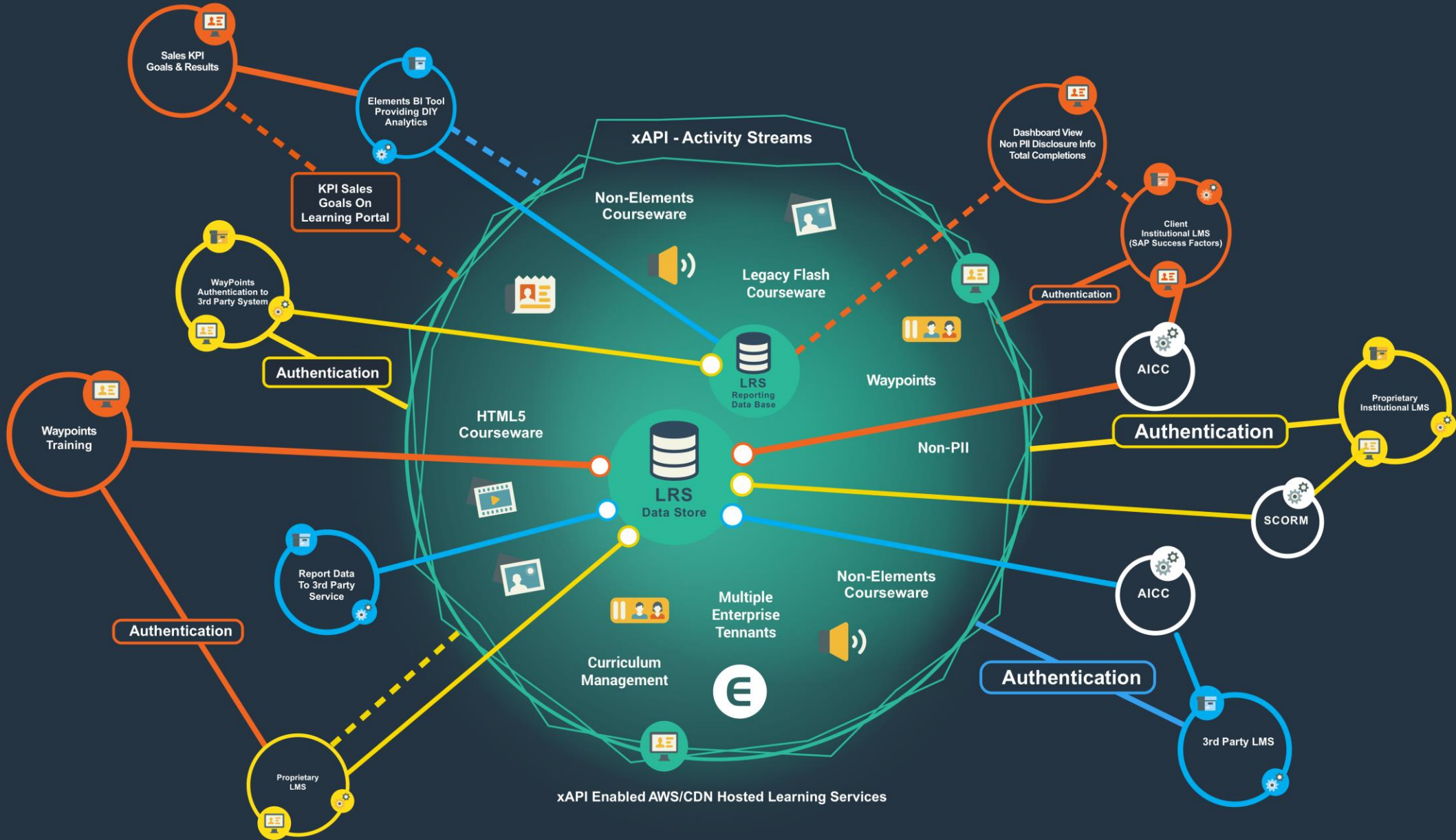
In-line Software Training. Integrated.

- xAPI powered Inline training on one of the world's most advanced legal research systems
- Sharing data from LRS to 3rd Party System
- Competency Based Assessment with xAPI
- Integration to client internal Custom LMS
- Integration to internal school LMS
- Multitenant / Admin Portal
- Configure / Edit / Courses

Provides quality legal, regulatory and business information.



- Multiple System Integrations
- Non-PII Data
- Waypoints In-line Training
- Competency based
- Curriculum Management
- Certification



Client Case

DoD



Captivating Virtual Instruction for Training (CVIT)

- Advanced Situational Awareness Training (ASAT)
 - IMI
- Intelligence Architecture Online Course (IAOC)
 - HTML5 2-d Games & IMI
- Supervisor Development Refresher (SDC-R)
 - IMI & HTML5 Games

*New technology training
efforts for the Army*



CACCTUS Training

- Elements installed at 5 CACCTUS locations
 - Experience Application Programming Interface (xAPI)
 - Learning Record Store (LRS)
- IMI
- Waypoints In-line training

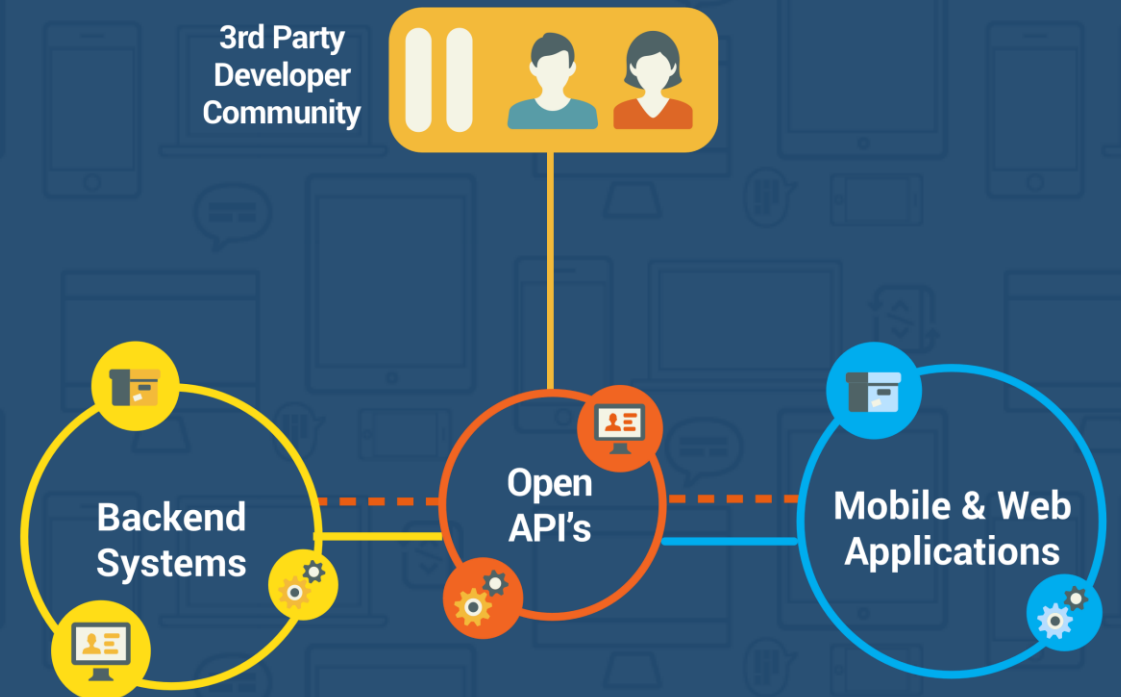


IMI
Desktop and Mobile view

How do I get started?

Most orgs are working incrementally

- Identify Need
 - Is there a new program that could use a new technology solution?
 - Analyze, make requirements and needs
- Organize proper team
 - Vendor who is capable
 - Internal technical team to work with vendor
- Consider Pilot/Proof of Principle



Q&A

Thank you

ELEMENTS[®]

Nick Washburn
Director, Learning Division
nick.washburn@riptidesoftware.com
Direct: 407-542-7684
Riptide Software, Inc.
200 East Palm Valley Drive
Oviedo, FL 32765

